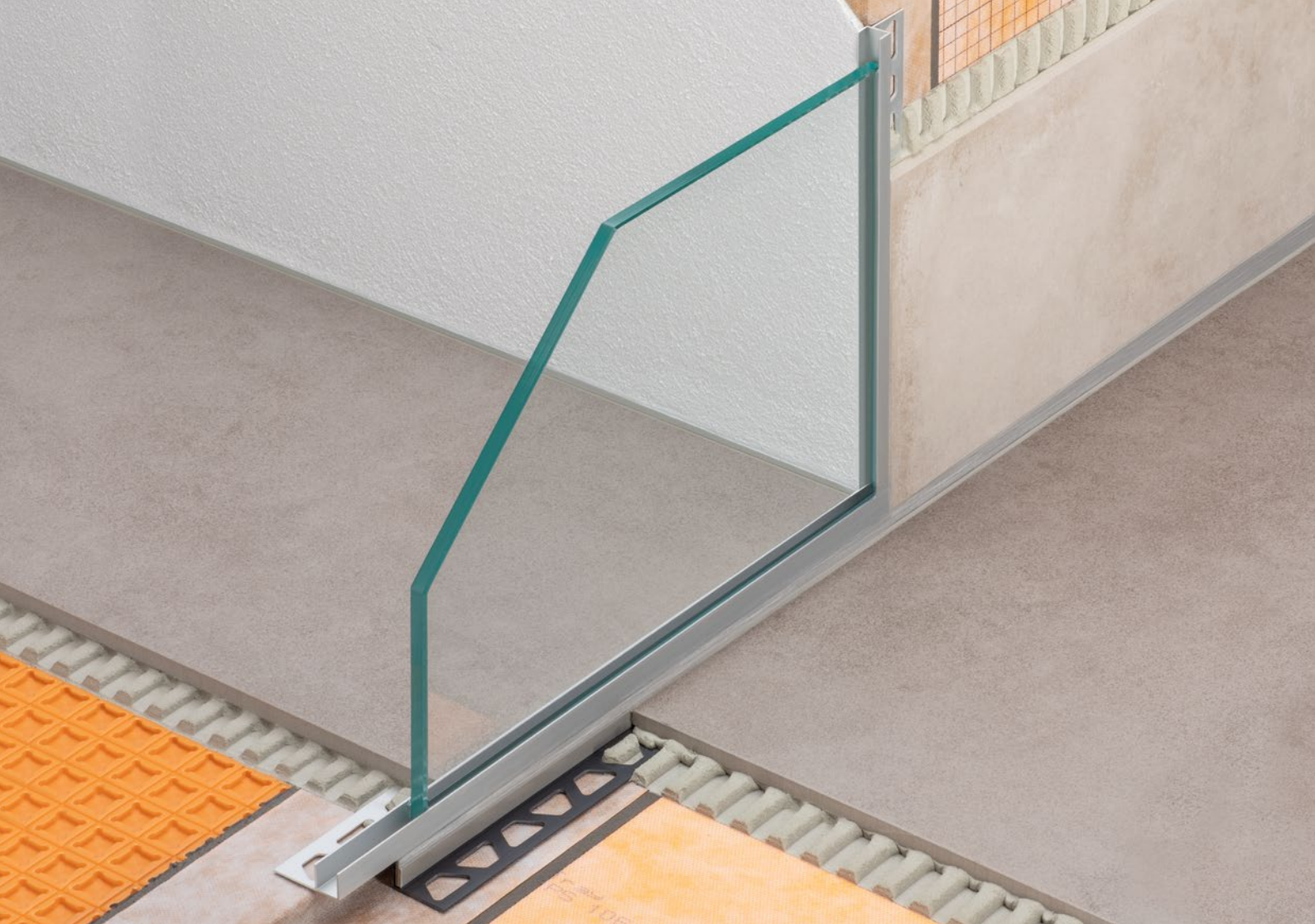


Attachment profiles for glass screen

Schlüter®-**DECO-SG / -SGC**





Secure support for glass partitions

Schlüter®-DECO-SG / -SGC

- ✓ Easy and flexible attachment
- ✓ Suitable for all installation scenarios
- ✓ Can be combined with Schlüter-SHOWERPROFILE-S
- ✓ Made of solid anodised aluminium
- ✓ DECO-SG also available in stainless steel (V4A)
- ✓ Available in four heights and two widths
- ✓ Now also suitable for wall corners adjoining plastered surfaces

What DECO-SG / -SGC can do

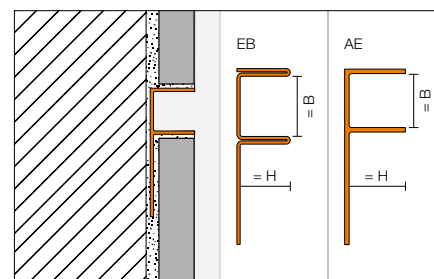
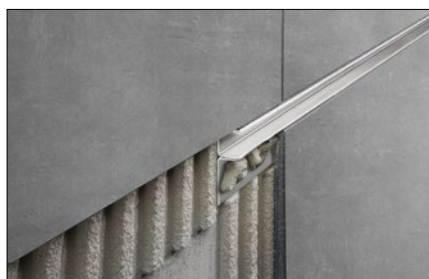
There's more to Schlüter-DECO-SG than meets the eye. The profile can of course be used for building decorative shadow gaps in wall coverings. Its special purpose, however, is to attach glass shower screens. The U-shaped attachment profile in widths of

12 and 15 mm provides secure support at the wall and floor, and DECO-SGC is especially designed for corners adjoining plastered walls. This makes the profile a logical addition to the extensive product range of Schlüter-Systems for level

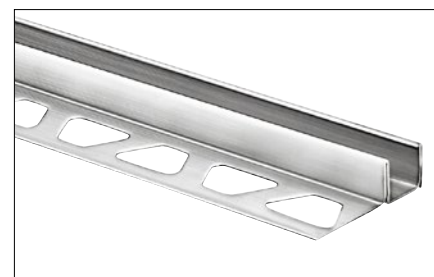
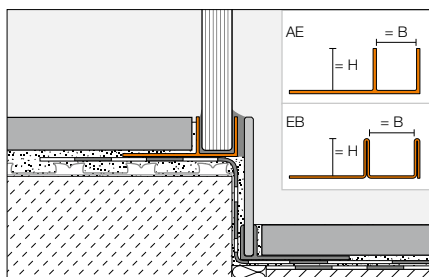
access showers, which are so well designed that they are a joy to install. DECO-SG also serves as an attachment profile for the pre-assembled LED module of the illumination set Schlüter-LIPROTEC-LLPM with its even light distribution and easy plug-in connection.

Schlüter-DECO-SG/-SGC are high-quality, decorative and functional profiles made of brushed stainless steel (V4A) or anodised aluminium for joint design in tile coverings and for attaching glass components.

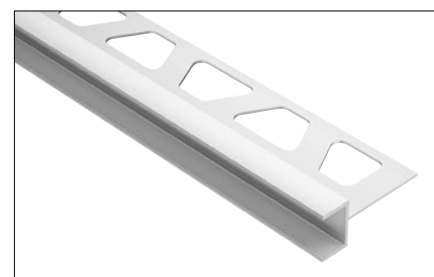
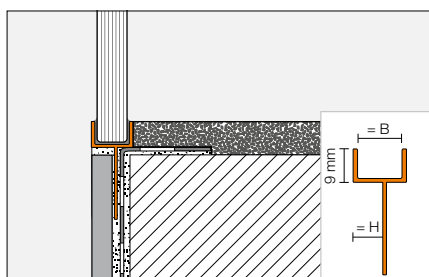
(Product data sheet 2.16)



Shower enclosure with Schlüter-DECO-SG-EB and Schlüter-SHOWERPROFILE-S



	DECO-SG				DECO-SGC	
	anodised aluminium		brushed stainless steel V4A		anodised aluminium	
H = mm	B=12 mm	B=15 mm	B=12 mm	B=15 mm	B=12 mm	B=15 mm
8	•	•	•	•	•	•
10	•	•	•	•	•	•
11	•	•	•	•	•	•
12.5	•	•	•	•	•	•





P R O F I L E O F I N N O V A T I O N

Schlüter-Systems KG · Schmölestraße 7 · D-58640 Iserlohn

Tel.: +49 2371 971-261 · Fax: +49 2371 971-112 · info@schlueter.de · www.schlueter-systems.com

Schlüter-Systems Ltd · Units 3-5 Bardon 22 Industrial Estate · Beveridge Lane · Coalville · Leicestershire · LE67 1TE

Tel.: +44 1530 813396 · Fax: +44 1530 813376 · sales@schluter.co.uk · www.schluter.co.uk