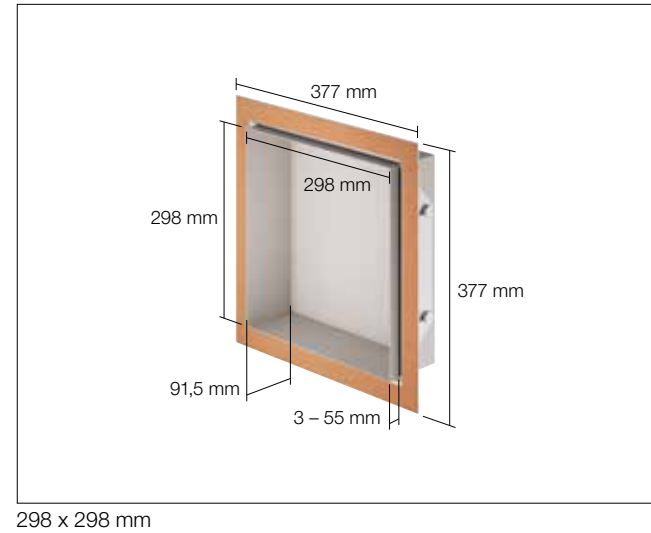
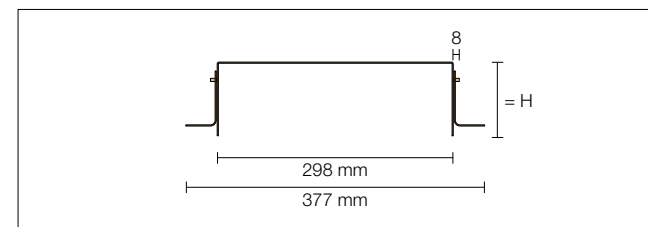
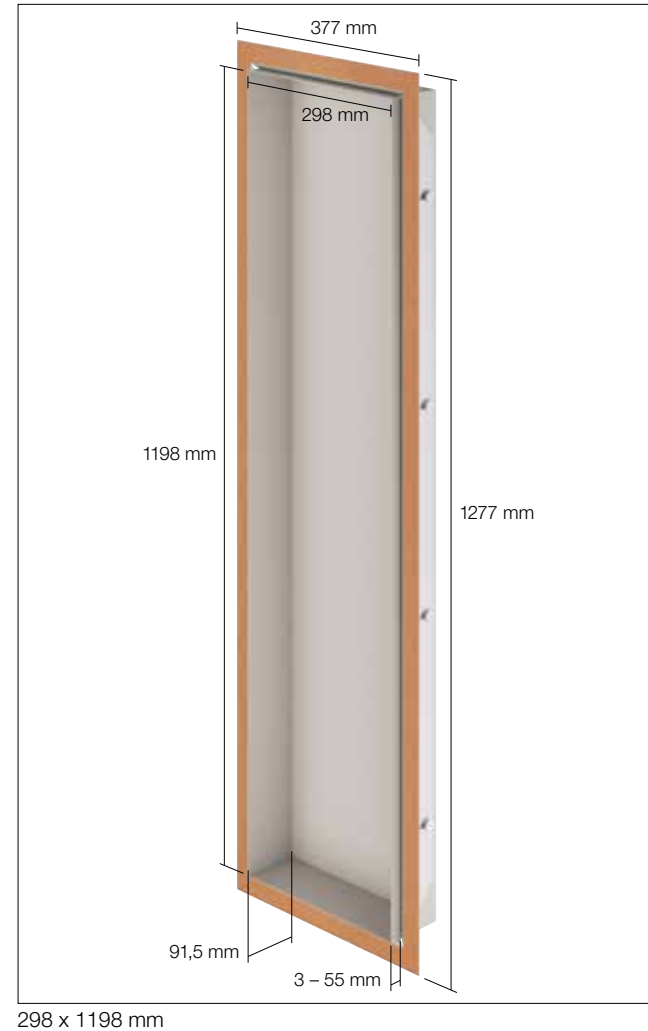


Design in the perfect format



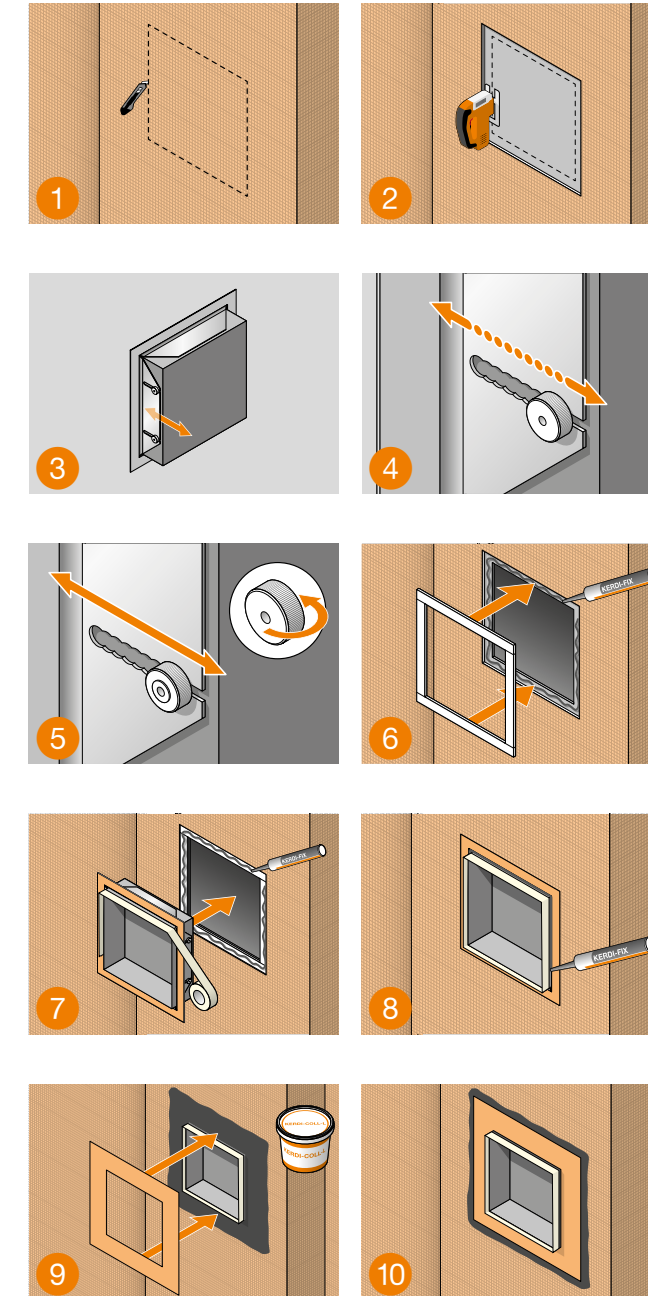
Design in the perfect format



Fast, easy installation

1. Make a cut-out for the niche and the frame. Only the top layer needs to be cut out for the frame.
2. Completely cut out the wall for the recess in the niche.
3. Determination of the above dimension. The adjustment range can be selected from 3 mm to 55 mm.
4. Use the 5 mm spacing grid when using the knurled nut as shown.
5. Infinitely variable adjustment of the distance after turning all knurled nuts.
6. Apply KERDI-FIX to the recess to bond the spacers, then insert and align the spacers.
7. Apply KERDI-FIX to the spacers to bond the frame, then insert and align the frame.
Note: For proper installation, we recommend protecting the outer surfaces of the niche with masking tape.
8. Use KERDI-FIX to completely fill the joint between the niche and the frame.
9. The enclosed KERDI sealing collar is glued to the frame and the adjacent waterproofing with Schlüter-KERDI-COLL-L.
10. Remove the painter's tape again.
Fresh residues of KERDI-FIX can be removed with spray oil (such as WD-40). The niche is now fully installed.

Fast, easy installation



Functional, flexible, stylish

Schlüter®-DESIGN-NICHE



Schlüter®-DESIGN-NICHE

Stylish, bespoke design

Schlüter-DESIGN-NICHE are pre-fabricated niches made of powder coated aluminium with a height adjustable frame for creating attractive and practical wall storage. The set includes a KERDI sealing collar for reliable waterproofing. The rectangular niches are available in three different dimensions and five TRENDLINE colours and can be installed either vertically or horizontally. All niches are supplied with an adjustable anodised aluminium frame, a prefabricated KERDI sealing collar and KERDI-FIX sealing adhesive.



Benefits

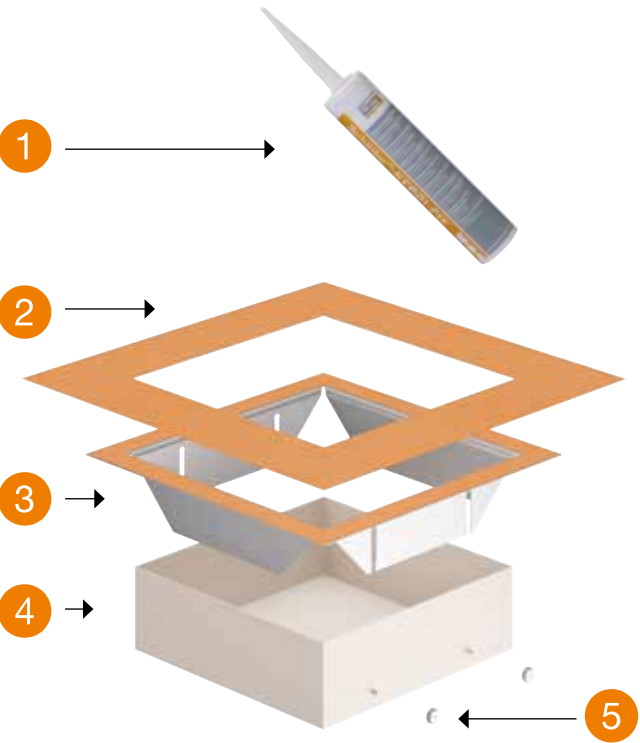
Visually appealing storage and design options that are both flexible and convenient

- ✓ **System combines adaptability, flexibility and design**
- ✓ **High quality powder coating available in five TRENDLINE colours**
- ✓ **Your choice of installation: Flush with tiles or protruding from the wall**
- ✓ **Suitable for all tile thicknesses**
- ✓ **Waterproof**
- ✓ **Available in three sizes to match standard tile dimensions**
- ✓ **All in one set**
- ✓ **Vertical and horizontal installation**
- ✓ **Low weight**
- ✓ **Simple, fast installation**
- ✓ **Suited for all wall types**
- ✓ **abP-certified**




Set contents

- 1 Schlüter®-KERDI-FIX
- 2 Schlüter®-KERDI waterproofing collar
- 3 Anodised aluminium frame
- 4 Powder-coated aluminium niche with threaded bolts
- 5 Knurled nut



DESIGN-NICHE colours

Textured coated natural ivory		TSI
Textured coated beige grey		TSBG
Textured coated Dark anthracite		TSDA
Matte brilliant white		MBW
Matte graphite black		MGS

Further information



Schlüter-Systems KG | Schmöllestraße 7 | D-58640 Iserlohn
+49 2371 971-0 | +49 2371 971-1111
info@schlueter.de | schlueter-systems.com

Schlüter-Systems Ltd | Units 3-6 Bardon 22 Industrial Estate | Bardon Hill | Coalville | Leicestershire | LE67 1TE
+44 (0) 1530 813396 | sales@schluter.co.uk | schluter.co.uk