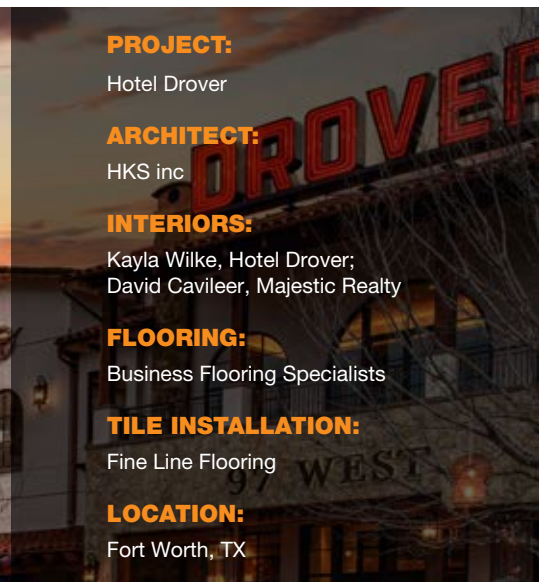


# Hotel Drover, Fort Worth, TX



Photo provided by Hotel Drover.



**PROJECT:**

Hotel Drover

**ARCHITECT:**

HKS inc

**INTERIORS:**

Kayla Wilke, Hotel Drover;  
David Cavileer, Majestic Realty

**FLOORING:**

Business Flooring Specialists

**TILE INSTALLATION:**

Fine Line Flooring

**LOCATION:**

Fort Worth, TX

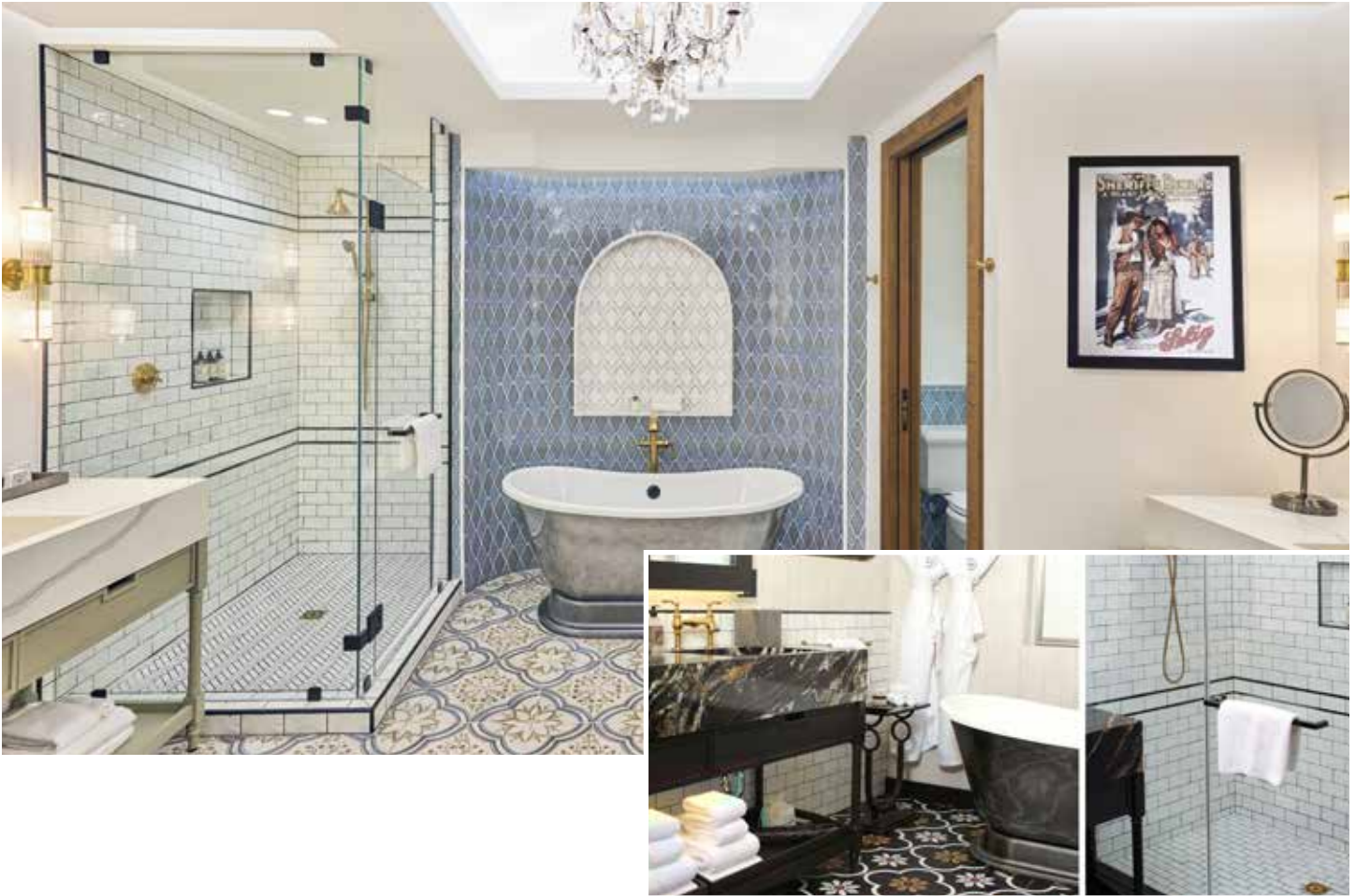
Schluter®-Systems has significantly enhanced the performance and style of Hotel Drover in Fort Worth, Texas. The hotel is located in The Stockyards, an area rich in history dating back to 1849 when Fort Worth was founded by Major Ripley Arnold. Post-Civil War, The Stockyards became a major hub for cattle drives, turning it into the southwest's largest livestock-trading center until the 1950s. After years of decline, a \$175 million redevelopment project in 2018 aimed to rejuvenate the district while preserving its historic charm. Central to this revitalization is Hotel Drover, a boutique hotel that blends Texas heritage with modern luxury.

Left photo provided by Hotel Drover. Right photo provided by Tom Atkinson.



**OBJECTIVE:**

The objective was to create a hotel that honors Fort Worth's rich history while offering modern luxury and comfort. Hotel Drover, part of Marriott's Autograph Collection, was designed as an "urban ranch oasis" that integrates Texas and Old West culture. The goal was to provide a unique and authentic experience through features like handcrafted chandeliers, cowhide lounge chairs, and custom boot jacks, while ensuring high standards of construction and functionality in its 200 guest rooms and suites. Schluter®-Systems played a crucial role by providing innovative waterproofing solutions that met both the aesthetic and practical needs of the project.



Photos provided by Tom Atkinson.

### CHALLENGES:

A significant challenge in renovating Hotel Drover's guest rooms revolved around the pre-existing shower areas. The initial installation by the plumber included off-center clamping ring drains intended for pan liners, which did not align with the intended use of Schluter's bonded waterproofing membranes. This discrepancy necessitated a solution that would ensure effective waterproofing without requiring extensive and labor-intensive modifications. Achieving a seamless integration of Schluter's waterproofing systems into the existing infrastructure was critical to maintaining the functionality and quality standards of the hotel rooms.

### SOLUTIONS:

#### Design and Construction

Schluter products were pivotal in addressing the challenges faced during the renovation of Hotel Drover's shower areas. The Schluter®-SHOWER-KIT, which includes a shower tray, curb, and KERDI waterproofing membrane, provided a comprehensive solution that simplified the materials required for each bathroom. The KERDI-DRAIN-A adapter kit was particularly essential as it enabled the contractor to easily convert the existing off-center clamping ring drains to integrated bonding flanges, saving significant time and labor.





## Implementation

The contractor utilized Schluter's prefabricated foam shower trays with integrated waterproofing membrane, allowing for precise trimming and gap-filling as necessary. This approach ensured efficient installation, with the waterproofing process completed in half a day and the entire shower area, including tiling, finished within just two days per shower. The use of Schluter's comprehensive system streamlined the workflow and guaranteed reliable waterproofing.

## Aesthetic Integration



The design incorporated modern encaustic tiles for bathroom floors and some shower bases, while white subway tiles were used for most shower walls and bases. Schluter's brushed vintage gold Pure design drain grate and shower glass hardware added elegant touches with gold fixtures and black accents. Additionally, Schluter profiles, introduced by flooring contractor Business Flooring Specialists, replaced the original ceramic trim. This change ensured uniform accents, enhanced the overall aesthetic, and allowed for a quicker installation process.

## RESULT:

The successful renovation of Hotel Drover has significantly contributed to the resurgence of The Stockyards, now attracting an estimated 3 million visitors annually. The integration of Schluter®-Systems' products played a crucial role in this success, providing modern, durable solutions that enhanced the hotel's functionality. Schluter's innovative waterproofing systems ensured reliable and efficient installation, meeting the high standards required for the project. This integration not only preserved the historical essence of the area but also demonstrated how modern construction techniques can honor a historical legacy while fulfilling contemporary needs. The project highlights Hotel Drover's importance as a centerpiece in The Stockyards' revitalization and showcases the effective use of Schluter products in achieving this goal.



Photos provided by Tom Atkinson.