

Schluter®-DILEX-F

Discreet Movement Joint with Interchangeable Inlay





Schluter®-DILEX-F

Virtually Invisible Movement Joint

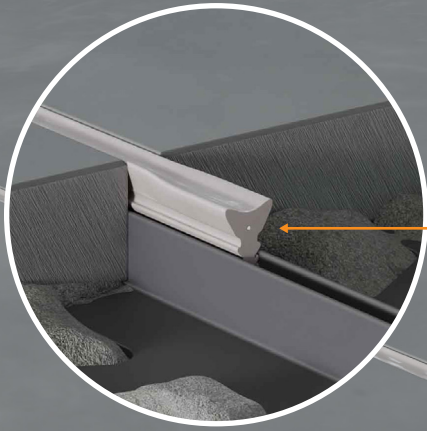
DILEX-F is a surface joint profile designed to allow movement and expansion in large, tiled floor installations. Our slimmest movement joint at only 1/8" (3.3 mm), it's a discreet movement joint that blends seamlessly into any tile field by mimicking grout lines, resulting in minimal visual interruption.

Movement joints are critical to the durability of tile floors because they provide stress relievers into the tile assembly, allowing expansion and contraction to take place without compromising the integrity of the floor. Without movement joints, tiles can pop up or "tent", making it important to consider these types of profiles in both residential and medium-duty commercial applications alike.

DILEX-F is almost indiscernible from neighboring grout lines due to its slim body, and the silicone inlay is available in 10 colors to match popular grout choices. The inlay is easily replaceable if damaged, and features a dirt-repellent surface for easy maintenance.



DILEX-F : a two-part system



Schluter®-**DILEX-FIS**: a silicone inlay available in 10 colors to match popular grout options



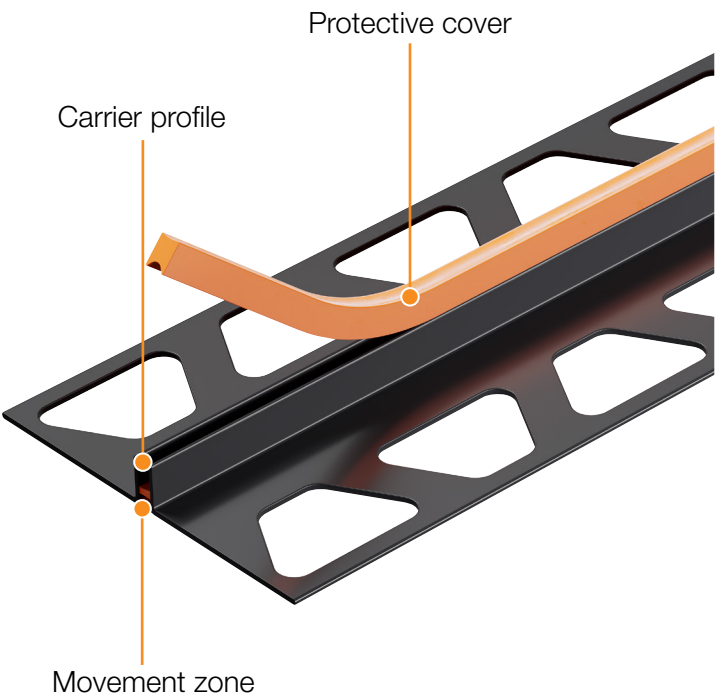
Schluter®-**DILEX-FCS**: a rigid PVC carrier profile

DILEX-FCS

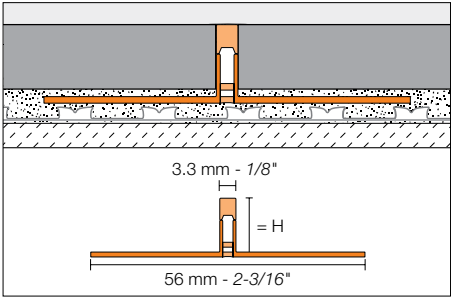
Carrier Profile

DILEX-FCS is the carrier profile that forms the body of the movement joint. It is made from a rigid PVC and features two anchoring legs that are embedded into thin-set; tiles are installed on top. DILEX-FCS comes with a removable protective cover that protects the carrier channel from grout and other debris during installation. The cover is easily removed when ready to insert selected DILEX-FIS.

- ✓ First Schluter profile where tile is installed directly against the profile removing the need for a grout joint
- ✓ Protective cover serves as a height gauge during tile installation
- ✓ Available in 4 heights: 11/32" (9 mm), 3/8" (10 mm), 7/16" (11 mm), 1/2" (12.5 mm)



Schluter®-DILEX-FCS		
Length = 2.5 m - 8' 2-1/2"	Carrier profile with protective cover	
H = mm - in.	Item No.	
9 - 11/32	FCS 90	
10 - 3/8	FCS 100	
11 - 7/16	FCS 110	
12.5 - 1/2	FCS 125	

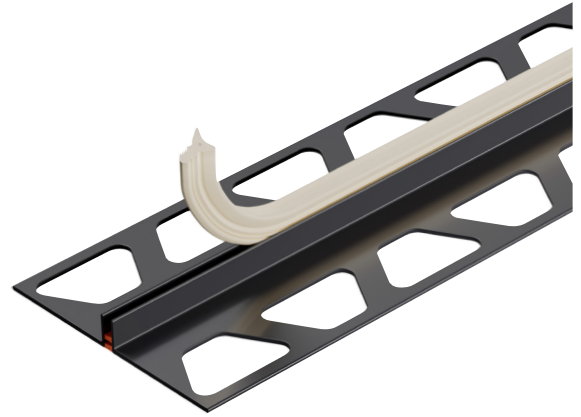


DILEX-FIS

Silicone Inlay

DILEX-FIS is a silicone inlay that is installed into the DILEX-FCS carrier channel. At only 1/8" (3.5 mm) wide, it is a discreet movement joint that mimics grout joints.

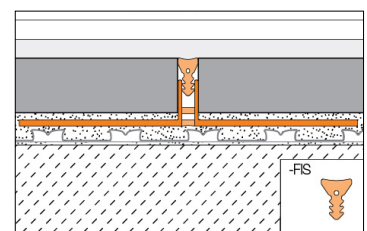
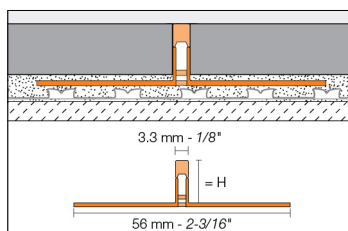
- ✓ Available in 100' / 31 m length
- ✓ Finished with a special surface treatment that reduces the accumulation of dust and dirt
- ✓ Features an anti-stretch nylon thread to avoid stretching during installation
- ✓ Made of extruded silicone



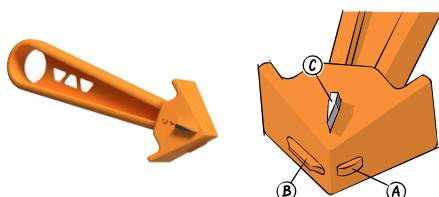
Available in 10 colors to match popular grout choices



Schluter®-DILEX-FIS
Silicone inlay
Length = 31 m - 100'
Item No.
FIS 300 + color*



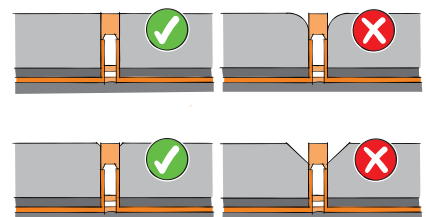
A specially designed installation tool is included with each roll of silicone inlay



The tool has a dual purpose: to clean the channel prior to installing the DILEX-FIS inlay (C), and to facilitate inlay installation (A+B).

i

Please choose a rectified tile when using DILEX-F, and note that tiles installed against the profile should be full-size with factory edges.



Learn More!

- Product details
- Installation video
- FAQs

