



MyDesign

by Schluter-Systems

TM



Illustrated Price List

Effective April 1, 2026

CANADA



YELLOW

Y

HOTELS





RAL Color Customization



Design without compromise

Color is more than a detail—it's a defining element of your space. With MyDesign by Schluter-Systems, you can now customize select profiles and shelves in any of the 190 RAL Classic colors, creating a finish that aligns precisely with your project vision.

Whether you're reinforcing brand identity in a commercial space, complementing surrounding finishes in a high-end residential build, or making a bold visual statement, RAL color customization offers seamless integration and elevated design control.

With RAL color customization, you can:

- ✓ Match trim to tile, grout, or paint for a cohesive finish
- ✓ Highlight architectural features with striking accents
- ✓ Bring corporate palettes into hospitality, retail, or multi-unit developments

From golden yellow and emerald green to blue grey and beyond, your project isn't limited by what's available off the shelf. It's defined by your vision—**right down to the last detail.**





How to Order

Profiles & Shelves in Custom RAL Colors

① Product Selection

Refer to pages 17–23 for item codes and pricing for products available in MyDesign RAL.


② Color Selection

- ✓ Select your RAL Classic color from the Schluter MyDesign offering.
- ✓ Provide the exact 4-digit RAL code (e.g., RAL 9010) when ordering.

Important: Colors are matched exclusively to the official RAL system. Digital screens, web images, and printed brochures are not accurate for final color selection.

③ Place Your Order

After confirming color and quantities, contact Customer Support to place your order:

 800-667-8746

 csrcanada@schluter.com

Your Customer Support representative will walk you through the custom ordering process and requirements.

Terms & Conditions will be outlined in the custom ordering agreement.

④ Set-up Fee

A set-up fee is applied to RAL orders and is based on order quantity, as indicated in the table below:

Order quantity	10-99	100-249	250+
Set-up fee	\$450	\$225	No set-up fee

- Set-up fee is charged at time of ordering.
- Set-up fee is charged once per color and waived on recurring orders of the same color.

Additional Information

 schluter.ca



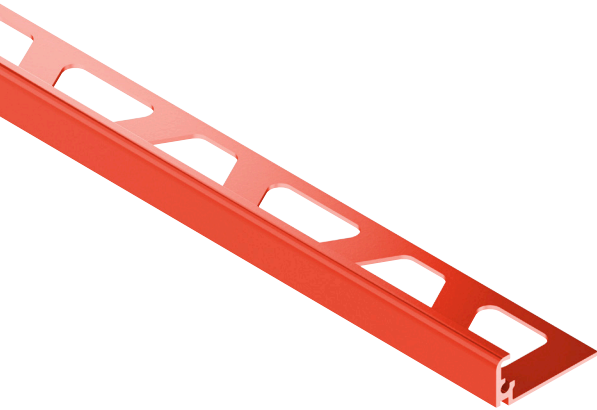


★ Custom RAL Colors

Schluter®-JOLLY

90° L-angle profile.

See page 43 for more information.

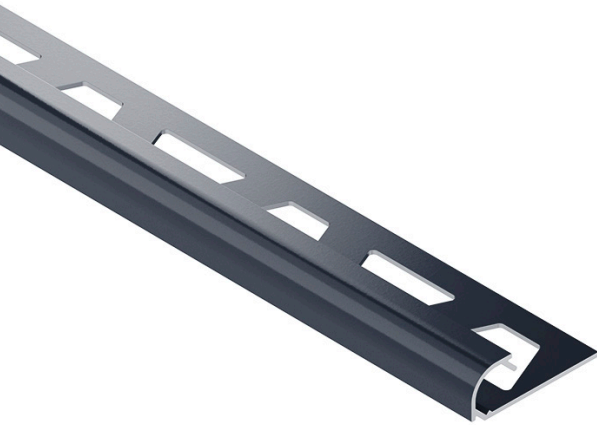


JOLLY				
Length = 2.5 m - 8' 2-1/2"	Color-coated aluminum			
H = mm - in.	Profile	\$/ Length	Outside corner	\$/ Unit
6 - 1/4	C/J 60 A	32.23	C/EV/J 60 A	18.02
8 - 5/16	C/J 80 A	33.15	C/EV/J 80 A	18.02
10 - 3/8	C/J 100 A	34.43	C/EV/J 100 A	18.02
11 - 7/16	C/J 110 A	35.13	C/EV/J 110 A	18.02
12.5 - 1/2	C/J 125 A	35.82	C/EV/J 125 A	18.02

Schluter®-RONDEC

Symmetrically rounded bullnose profile.

See page 48 for more information.



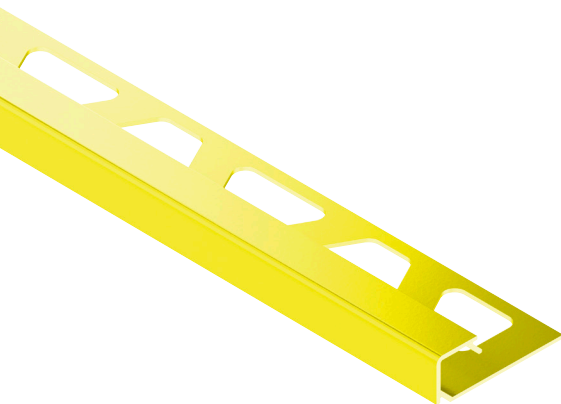
RONDEC		
Length = 2.5 m - 8' 2-1/2"	Color-coated aluminum	
H = mm - in.	Profile	\$/ Length
6 - 1/4	C/RO 60 A	35.76
8 - 5/16	C/RO 80 A	38.66
10 - 3/8	C/RO 100 A	42.00
12.5 - 1/2	C/RO 125 A	48.38

H = mm - in.	Inside corner	Outside corner	\$/ Unit
6 - 1/4	C/IV/RO 60 A	C/EV/RO 60 A	23.47
8 - 5/16	C/IV/RO 80 A	C/EV/RO 80 A	23.47
10 - 3/8	C/IV/RO 100 A	C/EV/RO 100 A	23.47
12.5 - 1/2	C/IV/RO 125 A	C/EV/RO 125 A	23.47

Schluter®-QUADEC

Square edge profile.

See page 57 for more information.



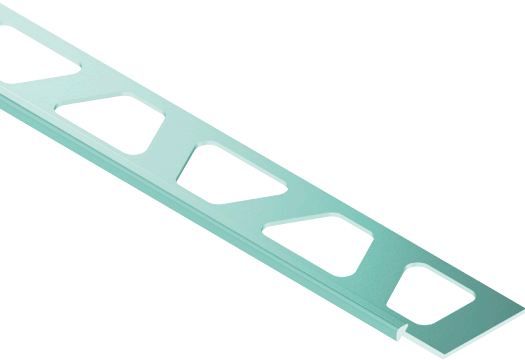
QUADEC				
Length = 2.5 m - 8' 2-1/2"	Color-coated aluminum			
H = mm - in.	Profile	\$/ Length	Inside/Outside corner	\$/ Unit
4.5 - 3/16	C/Q 45 A	34.08	C/EV/Q 45 A	22.82
6 - 1/4	C/Q 60 A	35.76	C/EV/Q 60 A	22.82
8 - 5/16	C/Q 80 A	38.66	C/EV/Q 80 A	22.82
10 - 3/8	C/Q 100 A	42.00	C/EV/Q 100 A	22.82
11 - 7/16	C/Q 110 A	43.86	C/EV/Q 110 A	22.82
12.5 - 1/2	C/Q 125 A	47.43	C/EV/Q 125 A	22.82



★ Custom RAL Colors

Schluter®-FINEC

Slim, minimalist profile.
See page 63 for more information.



FINEC			
Length = 2.5 m - 8' 2-1/2"	Color-coated aluminum		
H = mm - in.	Profile		\$ / Length
2.5 - 3/32	C/F 25 A		44.55
4.5 - 3/16	C/F 45 A		45.22
7 - 9/32	C/F 70 A		45.89
9 - 11/32	C/F 90 A		47.29
11 - 7/16	C/F 110 A		47.66
12.5 - 1/2	C/F 125 A		48.33

Schluter®-FINEC-SQ

Combines the slim design of FINEC with a squared 3/16" (4.5 mm) reveal.
See page 62 for more information.



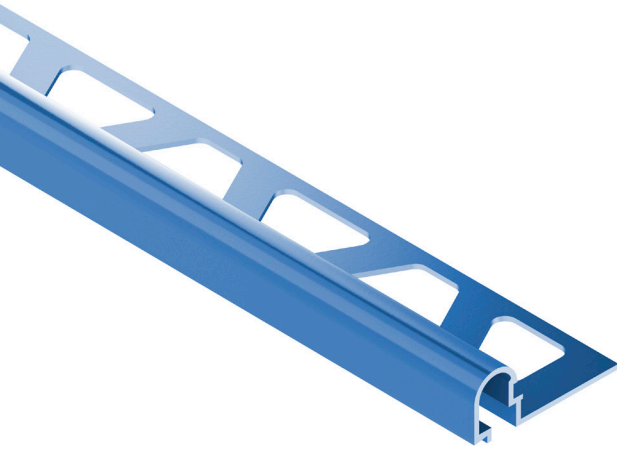
FINEC-SQ				
Length = 2.5 m - 8' 2-1/2"	Color-coated aluminum			
H = mm - in.	Profile	\$ / Length	Inside/Outside corner	\$ / Unit
11 - 7/16	C/FSQ 110 A	52.68	C/EV/Q 45A	22.82
12.5 - 1/2	C/FSQ 125 A	52.79		
15 - 9/16	C/FSQ 150 A	52.94		



★ Custom RAL Colors

Schluter®-RONDEC-DB

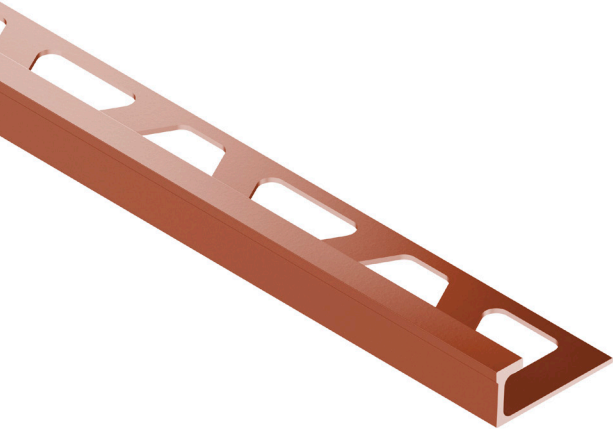
Decorative profile with pronounced visible surface.
See page 65 for more information.



RONDEC-DB		
Length = 2.5 m - 8' 2-1/2"	Color-coated aluminum	
H = mm - in.	Profile	\$ / Length
14 - 17/32	C/DB 14 A	60.55

Schluter®-DECO

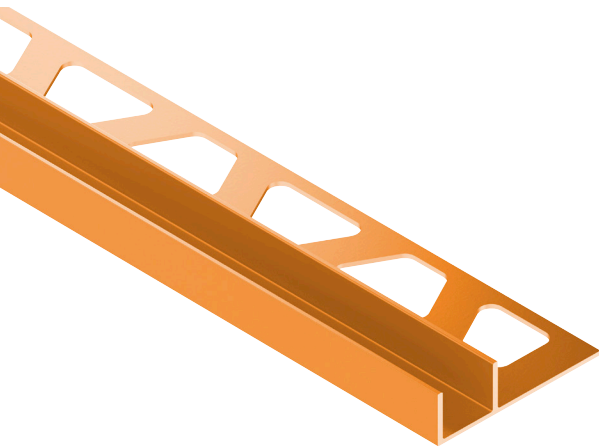
Finishing profile for decorative joint design.
See page 36 for more information.



DECO		
Length = 2.5 m - 8' 2-1/2"	Color-coated aluminum	
H = mm - in.	Profile	\$ / Length
8 - 5/16	C/A 80 D	53.60
10 - 3/8	C/A 100 D	57.19
12.5 - 1/2	C/A 125 D	58.83

Schluter®-DECO-SG

Forms a shadow gap for decorative designs or as a support for glass panels.
See page 67 for more information.



DECO-SG		
Length = 2.5 m - 8' 2-1/2"	Color-coated aluminum	
H = mm - in.	Profile	\$ / Length
W = 12.5 mm - 1/2"		
8 - 5/16	C/SG 80 A 12	66.88
10 - 3/8	C/SG 100 A 12	68.35
11 - 7/16	C/SG 110 A 12	69.12
12.5 - 1/2	C/SG 125 A 12	69.67
W = 15 mm - 9/16"		
8 - 5/16	C/SG 80 A 15	69.49
10 - 3/8	C/SG 100 A 15	70.96
11 - 7/16	C/SG 110 A 15	71.73
12.5 - 1/2	C/SG 125 A 15	72.28



★ Custom RAL Colors

Schluter®-DESIGNLINE

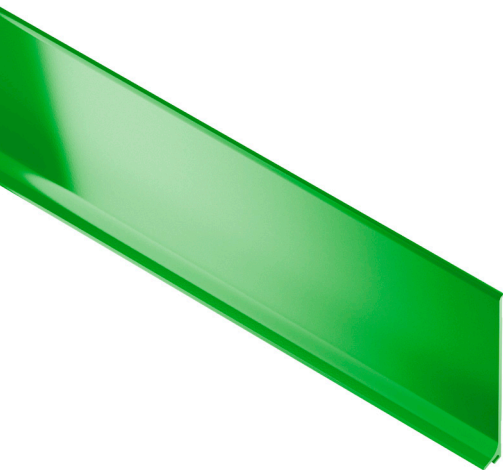
Border profile for decorative designs.
See page 66 for more information.



DESIGNLINE		
Length = 2.5 m - 8' 2-1/2"	Color-coated aluminum	
H = mm - in.	Profile	\$ / Length
6 - 1/4	C/DL 625 A	66.30

Schluter®-DESIGNBASE-SL

Modern alternative to traditional baseboards.
See page 77 for more information.



DESIGNBASE-SL		
Length = 2.5 m - 8' 2-1/2"	Color-coated aluminum	
H = mm - in.	Profile	\$ / Length
60 - 2-3/8	C/DBSL 60 A	78.16
80 - 3-1/8	C/DBSL 80 A	105.77

H = mm - in.	Inside corner	Outside corner	\$ / Unit
60 - 2-3/8	C/ID/DBSL 60 A	C/ED/DBSL 60 A	22.50
80 - 3-1/8	C/ID/DBSL 80 A	C/ED/DBSL 80 A	22.50

H = mm - in.	End cap (left)	End cap (right)	\$ / Unit
60 - 2-3/8	C/EL/DBSL 60 A	C/ER/DBSL 60 A	22.50
80 - 3-1/8	C/EL/DBSL 80 A	C/ER/DBSL 80 A	22.50

H = mm - in.	Connector	\$ / Unit
60 - 2-3/8	C/V/DBSL 60 A	22.50
80 - 3-1/8	C/V/DBSL 80 A	22.50





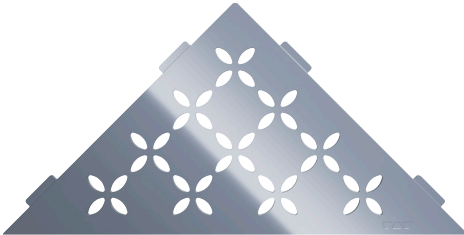
★ Custom RAL Colors

Schluter®-SHELF-E

Corner shelves that can be retrofitted or installed during tiling.
Available in three shapes: triangular, pentagonal, and quadrilateral.

Triangular

See page 202 for more information.



SHELF-E Triangular		
Color-coated aluminum		
Design	Item No.	\$ / Unit
SQUARE	C/SES1 D3 A	126.66
FLORAL	C/SES1 D5 A	126.66
CURVE	C/SES1 D6 A	119.21
PURE	C/SES1 D7 A	119.21
WAVE	C/SES1 D10 A	126.66

Pentagonal

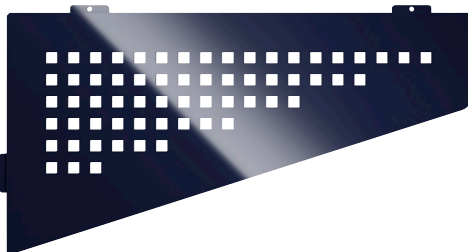
See page 204 for more information.



SHELF-E Pentagonal		
Color-coated aluminum		
Design	Item No.	\$ / Unit
SQUARE	C/SES2 D3 A	142.82
FLORAL	C/SES2 D5 A	142.82
CURVE	C/SES2 D6 A	132.88
PURE	C/SES2 D7 A	132.88
WAVE	C/SES2 D10 A	142.82

Quadrilateral

See page 206 for more information.



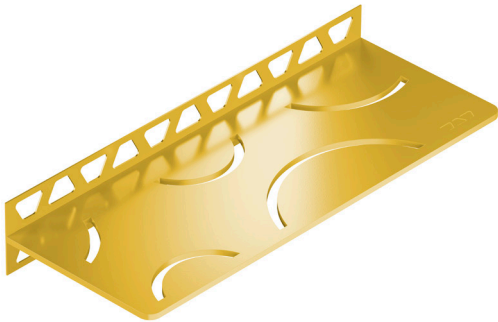
SHELF-E Quadrilateral		
Color-coated aluminum		
Design	Item No.	\$ / Unit
SQUARE	C/SES3 D3 A	163.95
FLORAL	C/SES3 D5 A	163.95
CURVE	C/SES3 D6 A	149.03
PURE	C/SES3 D7 A	149.03
WAVE	C/SES3 D10 A	163.95



★ Custom RAL Colors

Schluter®-SHELF-W

Wall-mounted rectangular shelf with perforated legs for installation during tiling. See page 200 for more information.



SHELF-W		
Color-coated aluminum		
Design	Item No.	\$ / Unit
SQUARE	C/SWS1 D3 A	162.69
FLORAL	C/SWS1 D5 A	162.69
CURVE	C/SWS1 D6 A	137.85
PURE	C/SWS1 D7 A	137.85
WAVE	C/SWS1 D10 A	162.69



Schluter®-SHELF-N

Made to fit KERDI-BOARD niches, installed during tiling. See page 208 for more information.

SHELF-N		
Color-coated aluminum		
Design	Item No.	\$ / Unit
SQUARE	C/SNS1 D3 A	141.58
FLORAL	C/SNS1 D5 A	141.58
CURVE	C/SNS1 D6 A	134.12
PURE	C/SNS1 D7 A	134.12
WAVE	C/SNS1 D10 A	141.58







Digital Printing



Design precision through digital innovation

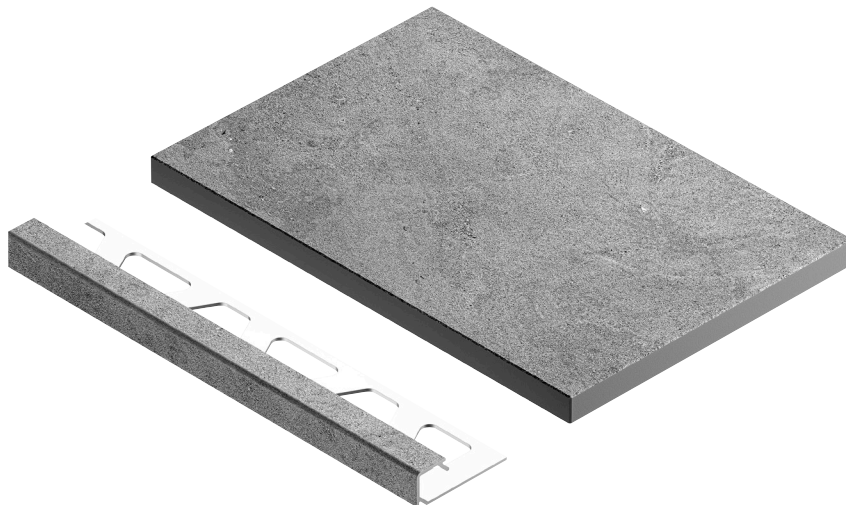
Today's tile designs are more advanced and individualized than ever—and now, your finishing profiles can keep pace. With MyDesign by Schluter-Systems, modern digital printing allows you to customize select profiles to visually blend with surrounding surfaces or stand out with precision.

Whether you're designing with natural textures, bold patterns, or bespoke finishes, digital printing offers refined integration and elevated creative freedom.

With digital printing, you can:

- ✓ Replicate tile textures like wood, marble, or stone for a cohesive look
- ✓ Extend tile graphics or patterns directly onto profiles
- ✓ Incorporate branding, logos, or custom motifs in commercial environments

Bring detail, continuity, and character to your tile installations—with finishes that do more than frame your design. **They complete it.**





How to Order Profiles in Custom Digital Print

① Product Selection

Refer to pages 27–31 for item codes and pricing for profiles available in MyDesign Digital Print.

② Place your Order

After confirming your profile selection, contact Customer Support to begin your order process:

 800-667-8746

 csrcanada@schluter.com

Custom printed designs require submission of a physical floor covering sample for high-resolution scanning or an approved digital artwork. Schluter-Systems will provide digitally printed samples for on-site review and approval prior to production; final orders may be placed only after sample approval.

Your Customer Support representative will walk you through the sample and custom product ordering process and requirements.

Terms & Conditions will be outlined in the custom ordering agreement.


③ Sample Fee

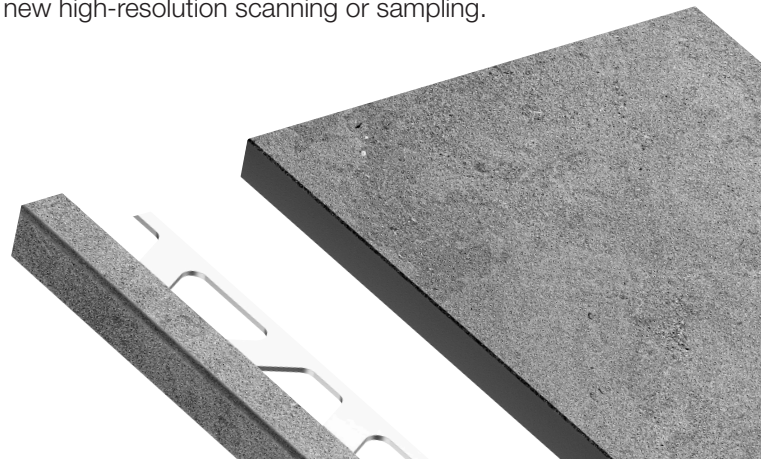
An initial \$550 sample fee applies to Digital Print. A credit is applied based on the final quantity ordered, as indicated in the table below:

Order quantity	10-99	100-249	250+
Sample fee	\$550	\$550	\$550
Sample fee credit	-	\$275	\$550

- Sample fee is billed at the time of order confirmation, when the sample process begins.
- Credit is applied once the order is placed, based on the final ordered quantity.
- Sample fee is waived for recurring orders that do not require new high-resolution scanning or sampling.

Additional Information

 schluter.ca





★ Custom Digital Print

Schluter®-JOLLY

90° L-angle profile.
See page 43 for more information.



JOLLY				
Length = 2.5 m - 8' 2-1/2"		Color-coated aluminum		
H = mm - in.	Profile	\$/ Length	Outside corner	\$/ Unit
6 - 1/4	C/J 60 DP	84.88	C/EV/J 60 DP	45.00
8 - 5/16	C/J 80 DP	85.80	C/EV/J 80 DP	45.00
10 - 3/8	C/J 100 DP	87.08	C/EV/J 100 DP	45.00
11 - 7/16	C/J 110 DP	87.78	C/EV/J 110 DP	45.00
12.5 - 1/2	C/J 125 DP	88.47	C/EV/J 125 DP	45.00

Schluter®-RONDEC

Symmetrically rounded bullnose profile.
See page 48 for more information.

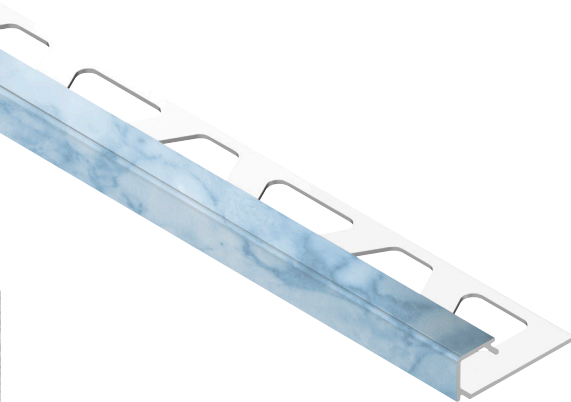


RONDEC		
Length = 2.5 m - 8' 2-1/2"		Color-coated aluminum
H = mm - in.	Profile	\$/ Length
6 - 1/4	C/RO 60 DP	88.41
8 - 5/16	C/RO 80 DP	91.31
10 - 3/8	C/RO 100 DP	94.65
12.5 - 1/2	C/RO 125 DP	101.03

H = mm - in.	Inside corner	Outside corner	\$/ Unit
6 - 1/4	C/IV/RO 60 DP	C/EV/RO 60 DP	45.00
8 - 5/16	C/IV/RO 80 DP	C/EV/RO 80 DP	45.00
10 - 3/8	C/IV/RO 100 DP	C/EV/RO 100 DP	45.00
12.5 - 1/2	C/IV/RO 125 DP	C/EV/RO 125 DP	45.00

Schluter®-QUADEC

Square edge profile.
See page 57 for more information.



QUADEC				
Length = 2.5 m - 8' 2-1/2"		Color-coated aluminum		
H = mm - in.	Profile	\$/ Length	Inside/Outside corner	\$/ Unit
6 - 1/4	C/Q 60 DP	88.41	C/EV/Q 60 DP	45.00
8 - 5/16	C/Q 80 DP	91.31	C/EV/Q 80 DP	45.00
10 - 3/8	C/Q 100 DP	94.65	C/EV/Q 100 DP	45.00
11 - 7/16	C/Q 110 DP	96.51	C/EV/Q 110 DP	45.00
12.5 - 1/2	C/Q 125 DP	100.08	C/EV/Q 125 DP	45.00



★ Custom Digital Print

Schluter®-DESIGNLINE

Border profile for decorative designs.
See page 66 for more information.



DESIGNLINE		
Length = 2.5 m - 8' 2-1/2"	Color-coated aluminum	
H = mm - in.	Profile	\$ / Length
6 - 1/4	C/DL 625 DP	118.95





★ Custom Digital Print

Schluter®-DESIGNBASE-SL

Modern alternative to traditional baseboards.
See page 77 for more information.



DESIGNBASE-SL			
Length = 2.5 m - 8' 2-1/2"	Color-coated aluminum		
H = mm - in.	Profile		\$/ Length
60 - 2-3/8	C/DBSL 60 DP		120.00
H = mm - in.	Inside corner	Outside corner	\$/ Unit
60 - 2-3/8	C/ID/DBSL 60 DP	C/ED/DBSL 60 DP	45.00
H = mm - in.	End cap (left)	End cap (right)	\$/ Unit
60 - 2-3/8	C/EL/DBSL 60 DP	C/ER/DBSL 60 DP	45.00
H = mm - in.	Connector		\$/ Unit
60 - 2-3/8	C//DBSL 60 DP		45.00

Schluter®-RONDEC-STEP

Profile with rounded upper edge for countertops or shelves.
See page 69 for more information.



RONDEC-STEP			
Length = 2.5 m - 8' 2-1/2"	Color-coated aluminum		
H = mm - in.	Profile		\$/ Length
8 - 5/16	C/RS 80 DP 39		145.00
10 - 3/8	C/RS 100 DP 39		147.00
12.5 - 1/2	C/RS 125 DP 39		151.00
H = mm - in.	Inside corner 90°	Outside corner 90°	\$/ Unit
8 - 5/16	C/I90RS 80 DP 39	C/E90RS 80 DP 39	45.00
10 - 3/8	C/I90RS 100 DP 39	C/E90RS 100 DP 39	45.00
12.5 - 1/2	C/I90RS 125 DP 39	C/E90RS 125 DP 39	45.00
H = mm - in.	Inside corner 135°	Outside corner 135°	\$/ Unit
8 - 5/16	C/I135RS 80 DP 39	C/E135RS 80 DP 39	45.00
10 - 3/8	C/I135RS 100 DP 39	C/E135RS 100 DP 39	45.00
12.5 - 1/2	C/I135RS 125 DP 39	C/E135RS 125 DP 39	45.00

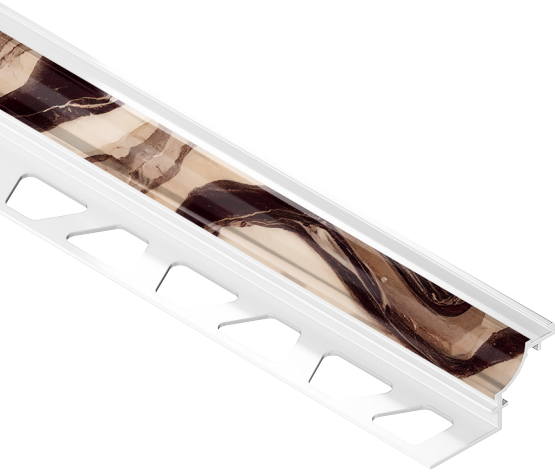




★ Custom Digital Print

Schluter®-DILEX-AHK

Cove-shaped profile for tile to tile inside corners.
See page 103 for more information.



DILEX-AHK		
Length = 2.5 m - 8' 2-1/2"	Color-coated aluminum	
H = mm - in.	Profile	\$/ Length
8 - 5/16	C/AHK1S 80 DP	132.44
10 - 3/8	C/AHK1S 100 DP	133.40
12.5 - 1/2	C/AHK1S 125 DP	134.88

Accessory	Item No.	\$/ Unit
Inside corner, 90°	C/190/AHK1S/DP	45.00
Inside corner, 135°	C/1135/AHK1S/DP	45.00
Outside corner, 90° - round	C/E90/AHK1S/DP	45.00
Outside corner, 90° - square	C/E90Q/AHK1S/DP	45.00
Outside corner, 135°	C/E135/AHK1S/DP	45.00
End cap	C/E/AHK1S/DP	45.00

Schluter®-DILEX-AHKA

Cove-shaped profile for tile to previously finished floors.
See page 107 for more information.



DILEX-AHKA		
Length = 2.5 m - 8' 2-1/2"	Color-coated aluminum	
H = mm - in.	Profile	\$/ Length
8 - 5/16	C/AHKA 80 DP	132.44
10 - 3/8	C/AHKA 100 DP	133.40
12.5 - 1/2	C/AHKA 125 DP	134.88
15 - 9/16	C/AHKA 150 DP	136.28

Accessory	Item No.	\$/ Unit
Inside corner, 90°	C/190/AHKA/DP	45.00
Inside corner, 135°	C/1135/AHKA/DP	45.00
Outside corner, 90°	C/E90/AHKA/DP	45.00
Outside corner, 135°	C/E135/AHKA/DP	45.00
End cap, left	C/EL/AHKA/DP	45.00
End cap, right	C/ER/AHKA/DP	45.00