

Schlüter®-DESIGN-NICHE

Niches

made from aluminium – for wall installation

17.2

Product data sheet

Application and function

Schlüter-DESIGN-NICHE are pre-fabricated niches made of powder coated aluminium with an adjustable frame to vary the depth. They create attractive and practical wall storage. The set includes a Schlüter-KERDI sealing collar for reliable waterproofing and Schlüter-KERDI-FIX sealing adhesive.

The niches are available in three different dimensions and five TRENDLINE colours and can be installed either vertically or horizontally. All niches are supplied with an adjustable anodised aluminium frame, a prefabricated KERDI sealing collar and Schlüter-KERDI-FIX sealing adhesive.

Material

The DESIGN-NICHE is available in the following material versions:

AC = colour coated aluminium

TS = textured finished aluminium

Material properties and areas of application:

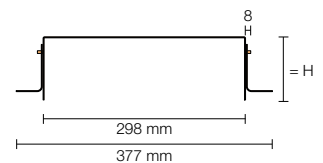
Schlüter-DESIGN-NICHE AC (colour coated aluminium): The aluminium is pre-treated and powder-coated with a polyurethane covering.

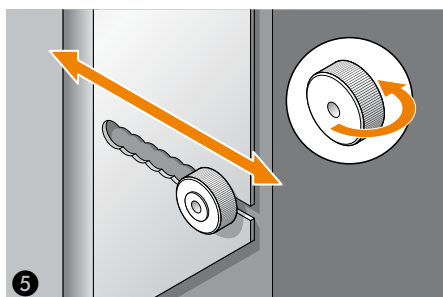
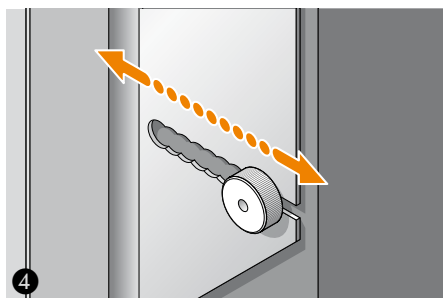
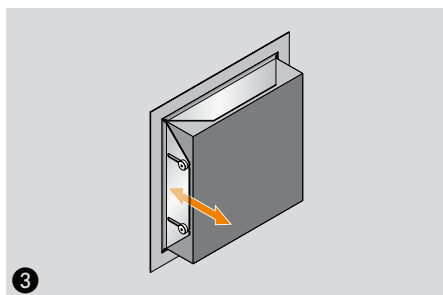
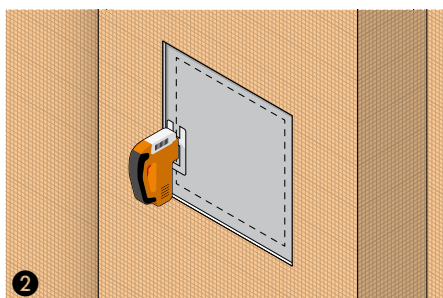
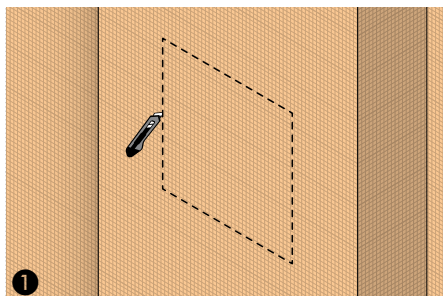
The coating is colour-stable and also UV and weather-resistant. The visible edges must be protected against abrasion or scratching.

TS profiles (textured finished aluminium): The surfaces have a natural appearance (see DESIGN-NICHE for further properties). In conjunction with Schlüter-KERDI or Schlüter-KERDI-BOARD and the matching



Schlüter-KERDI-KEBA, installers can create certified bonded waterproofing assemblies. Schlüter waterproofing systems have been granted German technical approval (general building authority test certificates, abP) and European Technical Assessment (ETA). DESIGN-NICHE is a component of these waterproofing systems and can be installed in accordance with the DIN 18534 waterproofing standard.





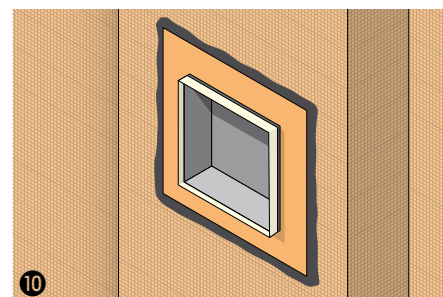
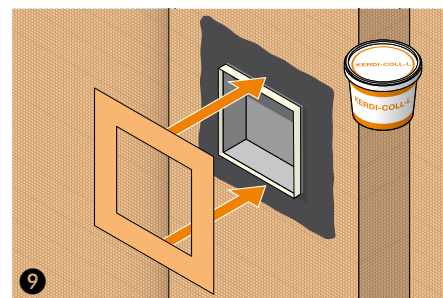
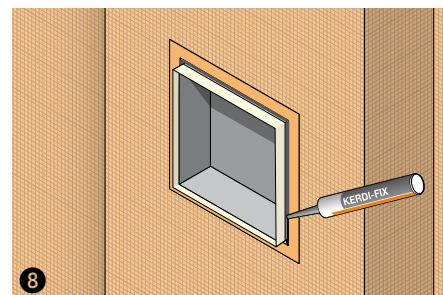
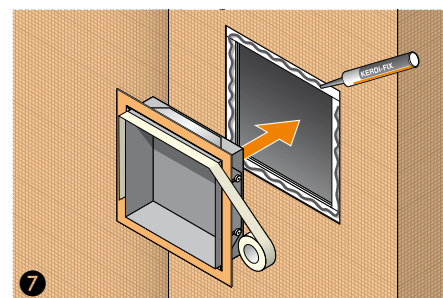
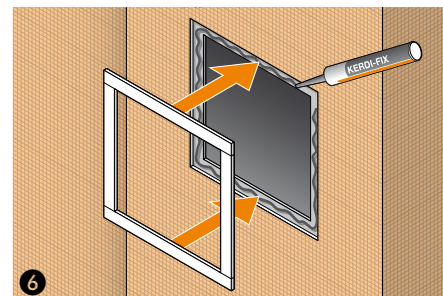
Areas of application and installation

Installation in Schlüter-KERDI-BOARD:

1. Make a cut-out by positioning and precisely marking the external dimensions of the niche and the frame. Only the top layer of the frame needs to be cut out (Fig. 1). Completely cut out the wall for the recess in the niche (Fig. 2).
 2. Determination of the above dimension. Adjustment range can be selected from 3 mm to 55 mm (Fig. 3). Use the 5 mm spacing grid when using the knurled nut as shown (Fig. 4). Infinitely variable adjustment of the distance by turning the knurled nut (Fig. 5).
 3. Apply KERDI-FIX to the recess to bond the spacers, then insert and align the spacers (Fig. 6).
 4. Apply KERDI-FIX to the spacers to bond the frame, then insert and align the frame (Fig. 7).
- Note: For a proper installation, we recommend protecting the outer surfaces of the niche with masking tape (Fig. 7).
5. Use KERDI-FIX to completely fill the joint between the niche and the frame (Fig. 8).
 6. The KERDI sealing collar is glued to the frame and the adjacent waterproofing with KERDI-COLL-L (Fig. 9).
- Then remove the masking tape again. Fresh residues of KERDI-FIX can be removed with spray oil (such as WD-40).

Notes

Schlüter-DESIGN-NICHE requires no special maintenance or care. Do not use abrasive cleaning agents on the sensitive surfaces. All cleaning agents must be free of hydrochloric and hydrofluoric acid.





Product overview:

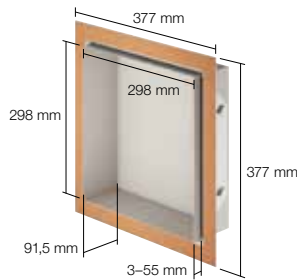
Schlüter®-DESIGN-NICHE

Niche width = 298 mm / niche depth = 91.5 mm

Colours: MBW = matte brilliant white, MGS = matte graphite black, TSBG = textured beige grey, TSDA = textured dark anthracite, TSI = textured ivory

Niche height	MBW	MGS	TSBG	TSDA	TSI
298 mm	•	•	•	•	•
598 mm	•	•	•	•	•
1198 mm	•	•	•	•	•

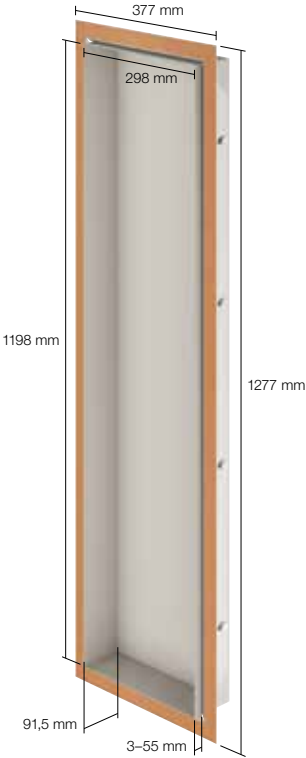
Schlüter®-DESIGN-Niche 298 x 298 mm



Schlüter®-DESIGN-Niche 298 x 598 mm



Schlüter®-DESIGN-Niche 298 x 1198 mm






Schlüter-Systems KG  Schmölestraße 7 | D-58640 Iserlohn

 +49 2371 971-0  +49 2371 971-1111  info@schlueter.de  schlueter-systems.com

Schlüter-Systems Ltd  Units 3-6 Bardon 22 Industrial Estate | Bardon Hill | Coalville | Leicestershire | LE67 1TE

 +44 (0) 1530 813396  sales@schluter.co.uk  schluter.co.uk