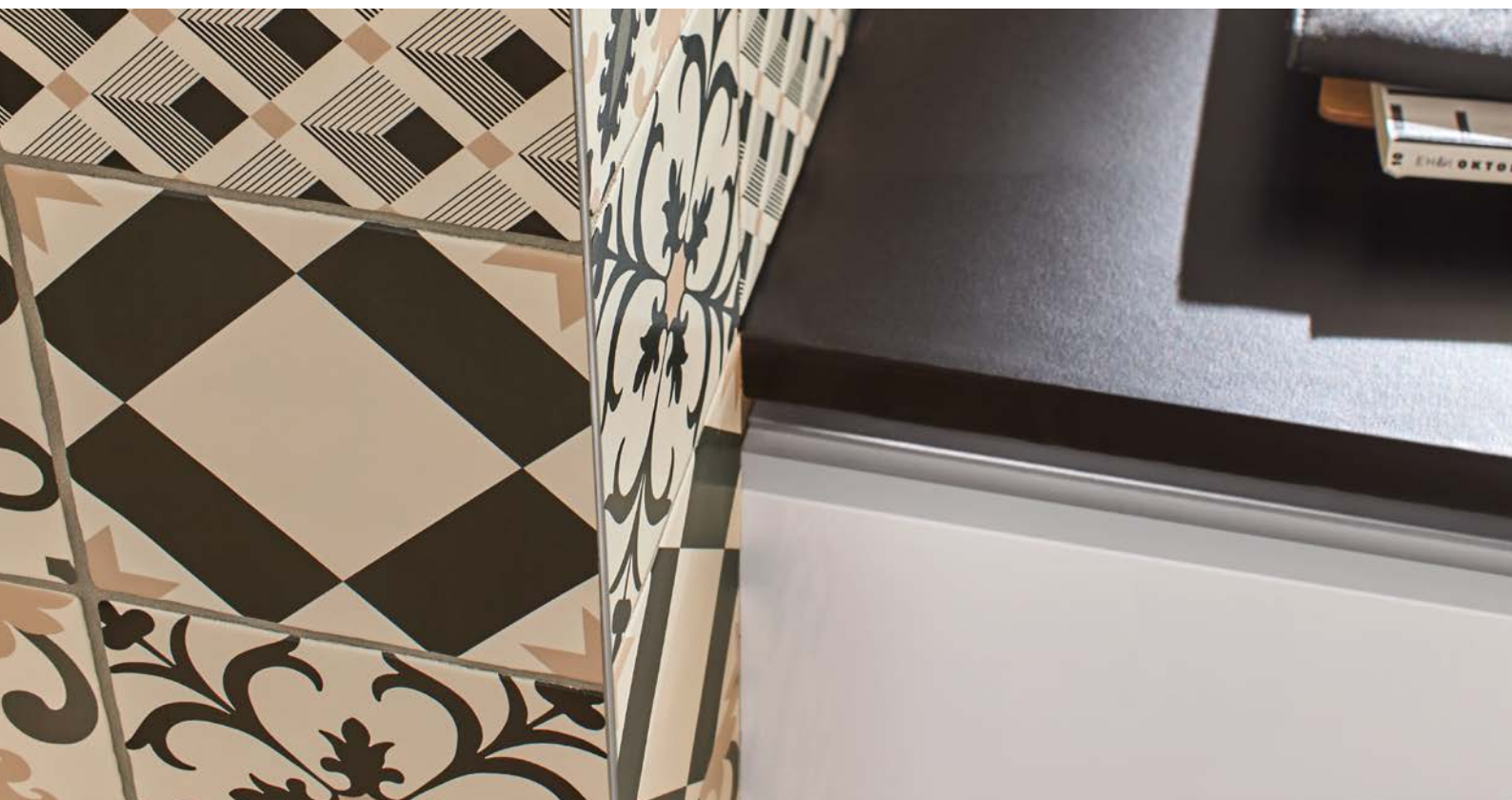


Schlüter®-FINEC / -FINEC-SQ

Fine attention to detail



PROFILE OF INNOVATION

Fine attention to detail – Schlüter®-FINEC

Less is more. True to this motto, Schlüter-FINEC and Schlüter-FINEC-SQ create slim corner formations for elegant wall design. The profiles combine outstanding material quality for reliable corner protection with minimalist design. In response to the popularity of the product, we have expanded the FINEC assortment to include a new profile with a slim geometry that is suitable for use with thick tiles as well. FINEC is available in: • **stainless steel** • **anodised aluminium** • **textured aluminium** • **colour coated aluminium**. FINEC-SQ comes in select colours.





One profile for many coverings

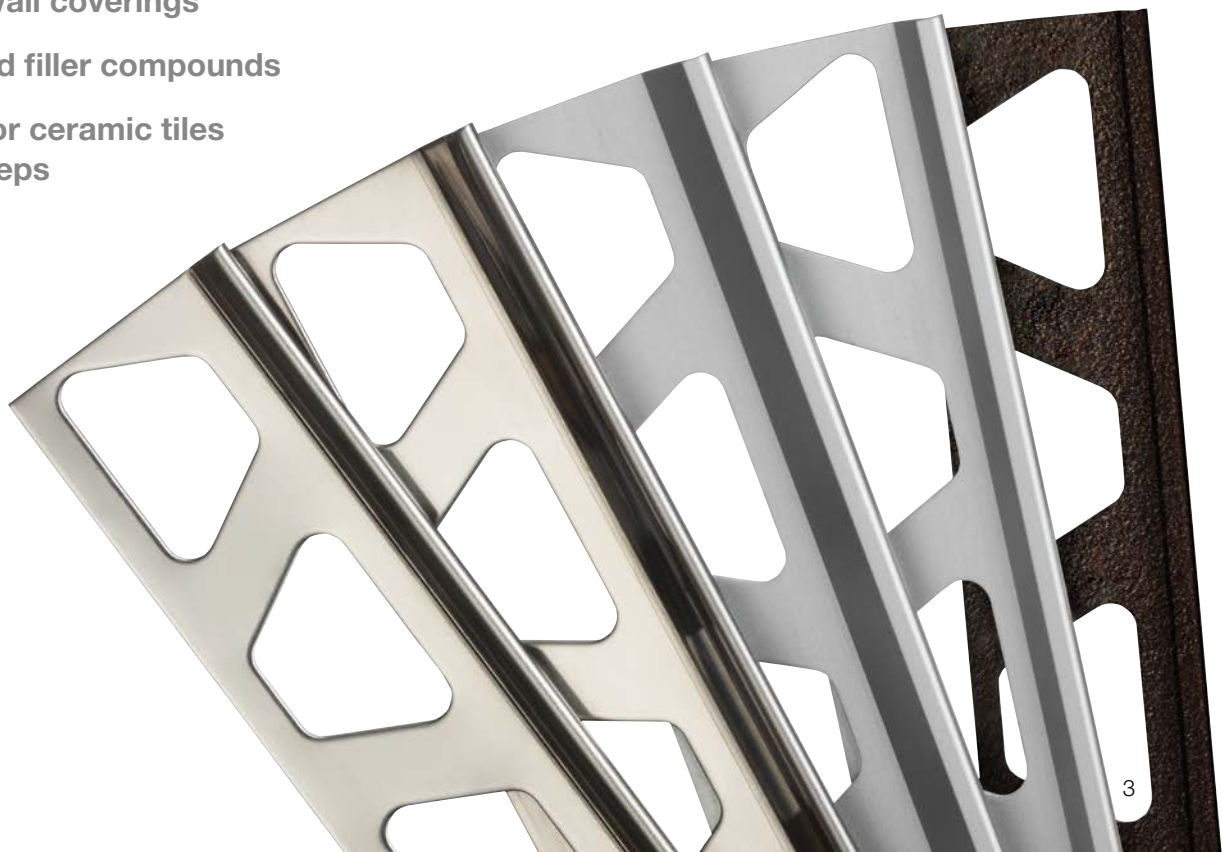
Thanks to their sturdy design, excellent material quality and various profile heights, Schlüter-FINEC profiles offer effective protection for the edges of a wide range of wall coverings. The stainless steel versions of

the profiles can also be used on step edges, for example to protect stair coverings made of epoxy resin or tiles.

Effective edge protection for:

- ✓ Mosaics
- ✓ Ceramic wall coverings
- ✓ Plaster and filler compounds
- ✓ Coatings or ceramic tiles on stair steps

i
More information about FINEC-SQ can be found from page 6.





Reliable edge protection – barely visible

Schlüter-FINEC is designed to offer secure edge protection with a minimal visible area. This results in a particularly discrete finished edge and emphasises the appearance of coverings.

Finishing edge of glass mosaics

Although the visible edges of FINEC don't interfere with the lively appearance of glass mosaics, the profile offers optimum protection for the sensitive material. The bevelled mosaic edge creates a slim edge joint on its own.

Finishing tile coverings in popular colours

The visible area of the new Schlüter-FINEC-TS profiles in ten textured finish options matches popular ceramic styles and allows for creating virtually invisible edges that provide durable protection. Please note that the

tile edges should be bevelled at a 45 degree angle.

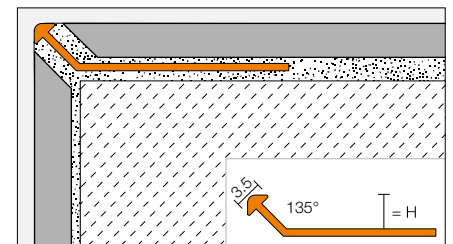
Finishing plaster and filler compounds

FINEC profiles with their low profile height from 2.5 mm also offer secure edge protection for non-ceramic wall coverings. These can include biologically active clay plaster or conventional white textured plaster.

Protection for stair step coverings

Since FINEC profiles made of stainless steel are especially durable, they offer dependable edge protection on stairs. The various

profile heights can effectively protect both ceramic tile coverings and coatings.



Tiles should have a 45 degree bevelled edge



Finished edges in popular colours



Protection of plaster and filler compounds



Protection of stair coatings

Height and colour overview

Schlüter®-FINEC-E/-AE/-AC				
H = mm	FINEC		FINEC-AC	
	E	AE	MBW	MGS
2.5		•	•	
4.5	•	•	•	•
7	•	•	•	•
9	•	•	•	•
11	•	•	•	•
12.5	•	•	•	•

E = stainless steel

AE = anodised aluminium

MBW = colour coated aluminium, matte brilliant white

MGS = colour coated aluminium, matte graphite black

Schlüter®-FINEC-TS										
H = mm	TSI	TSC	TSBG	TSB	TSSG	TSG	TSOB	TSLA	TSDA	TSR
2.5										
4.5	•	•	•	•	•	•	•	•	•	•
7	•	•	•	•	•	•	•	•	•	•
9	•	•	•	•	•	•	•	•	•	•
11	•	•	•	•	•	•	•	•	•	•
12.5	•	•	•	•	•	•	•	•	•	•

TSI = aluminium, textured natural ivory / **TSC** = aluminium, textured natural cream

TSBG = aluminium, textured natural beige grey / **TSB** = aluminium, textured natural beige

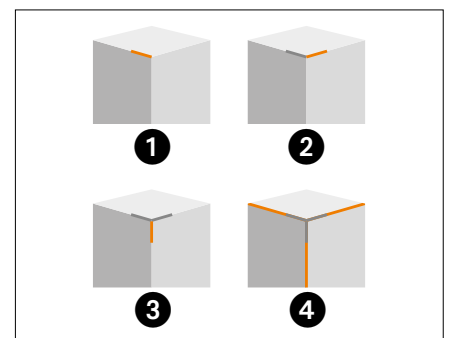
TSSG = aluminium, textured natural stone grey / **TSG** = aluminium, textured natural grey

TSOB = aluminium, textured natural bronze / **TSLA** = aluminium, textured natural light anthracite

TSDA = aluminium, textured natural dark anthracite / **TSR** = aluminium, textured rustic brown

Corner sets for easy installation

Corner sets are now available for the discrete elegant finishing profile Schlüter-FINEC to match the stainless steel and anodised aluminium versions of the profile as well as FINEC profiles made of textured aluminium. The latter can be ordered in all ten colour shades of the Schlüter-TRENDLINE series as well as in matte brilliant white and matte graphite black.



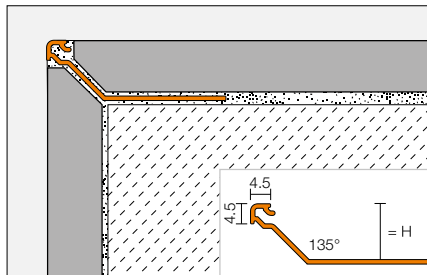
Note:

The corner set includes three parts.



Slim edges for tiles and natural stone

Discrete, elegant corner formations for the external edges of tile coverings: Schlüter-FINEC-SQ is a high-quality finishing profile made of anodised or textured aluminium in attractive on-trend colours. It reliably protects the external edges of tile or natural stone coverings on walls from mechanical damage. Its 4.5 x 4.5 mm visible area forms an elegant yet unobtrusive square corner formation. The pre-fabricated Schlüter-QUADEC corner piece can be used to create external corners. The profile is ideally suited for combination with further Schlüter solutions made of stainless steel or textured aluminium.



Height and colour overview

Schlüter®-FINEC-SQ								
H = mm	AE	TSI	TSC	TSBG	TSB	TSSG	TSG	TSOB
11	•	•	•	•	•	•	•	•
12.5	•	•	•	•	•	•	•	•
15	•	•	•	•	•	•	•	•
H = mm	TSLA	TSDA	TSR	MBW	MGS			
11	•	•	•	•	•			
12.5	•	•	•	•	•			
15	•	•	•	•	•			

AE = anodised aluminium

TSI = aluminium, textured natural ivory

TSC = aluminium, textured natural cream

TSBG = aluminium, textured natural beige grey

TSB = aluminium, textured natural beige

TSSG = aluminium, textured natural stone grey

TSG = aluminium, textured natural grey

TSOB = aluminium, textured natural bronze

TSLA = aluminium, textured natural light anthracite

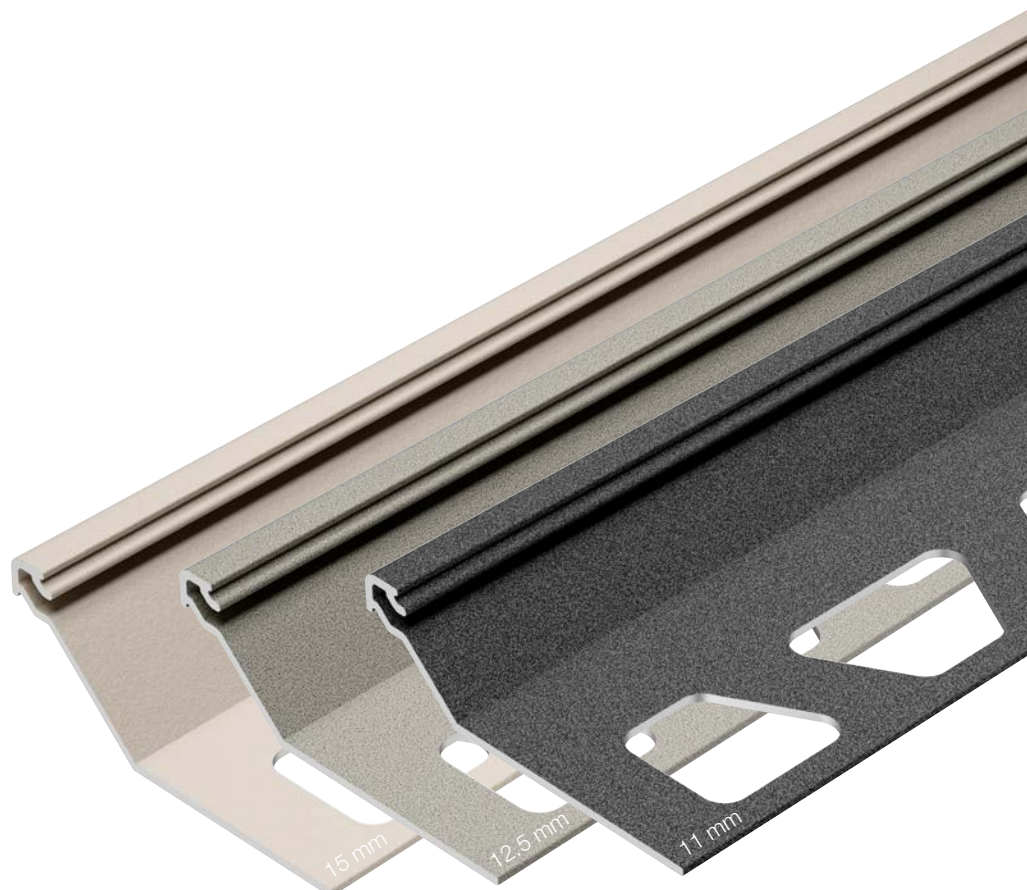
TSDA = aluminium, textured natural dark anthracite

TSR = aluminium, textured natural rustic brown

MBW = colour coated aluminium, matte brilliant white

MGS = colour coated aluminium, matte graphite black

i
To create external corners,
please use pre-fabricated
Schlüter-QUADEC corner pieces
in a height of 4.5 mm.





Informative. Find out more!

Would you like to know more about Schlüter-Systems?
The quickest way is to visit our website.
For more information, visit our website at www.schluter.co.uk



PROFILE OF INNOVATION

Schlüter-Systems KG · Schmölestraße 7 · D-58640 Iserlohn
Tel.: +49 2371 971-261 · Fax: +49 2371 971-112 · info@schlueter.de · www.schlueter-systems.com
Schlüter-Systems Ltd · Units 3-5 Bardon 22 Industrial Estate · Beveridge Lane · Coalville · Leicestershire · LE67 1TE
Tel.: +44 1530 813396 · Fax: +44 1530 813376 · sales@schluter.co.uk · www.schluter.co.uk