

Lamborghini Montreal

**THE PROJECT:**

Lamborghini Montreal

INSTALLATION BY:

Keven Rousseau of Ceramique RK

DATE:

2022

LOCATION:

Montreal, QC



Brand enthusiasts will find John Scotti's Lamborghini dealership in Montreal, Quebec a true sanctuary. Race cars and technology lovers will admire their commitment to quality and authenticity and can appreciate the fine leathers, pure silks, and ultra-light carbon-fibre that all contribute to the exclusive handcrafted designed cars that you find there.

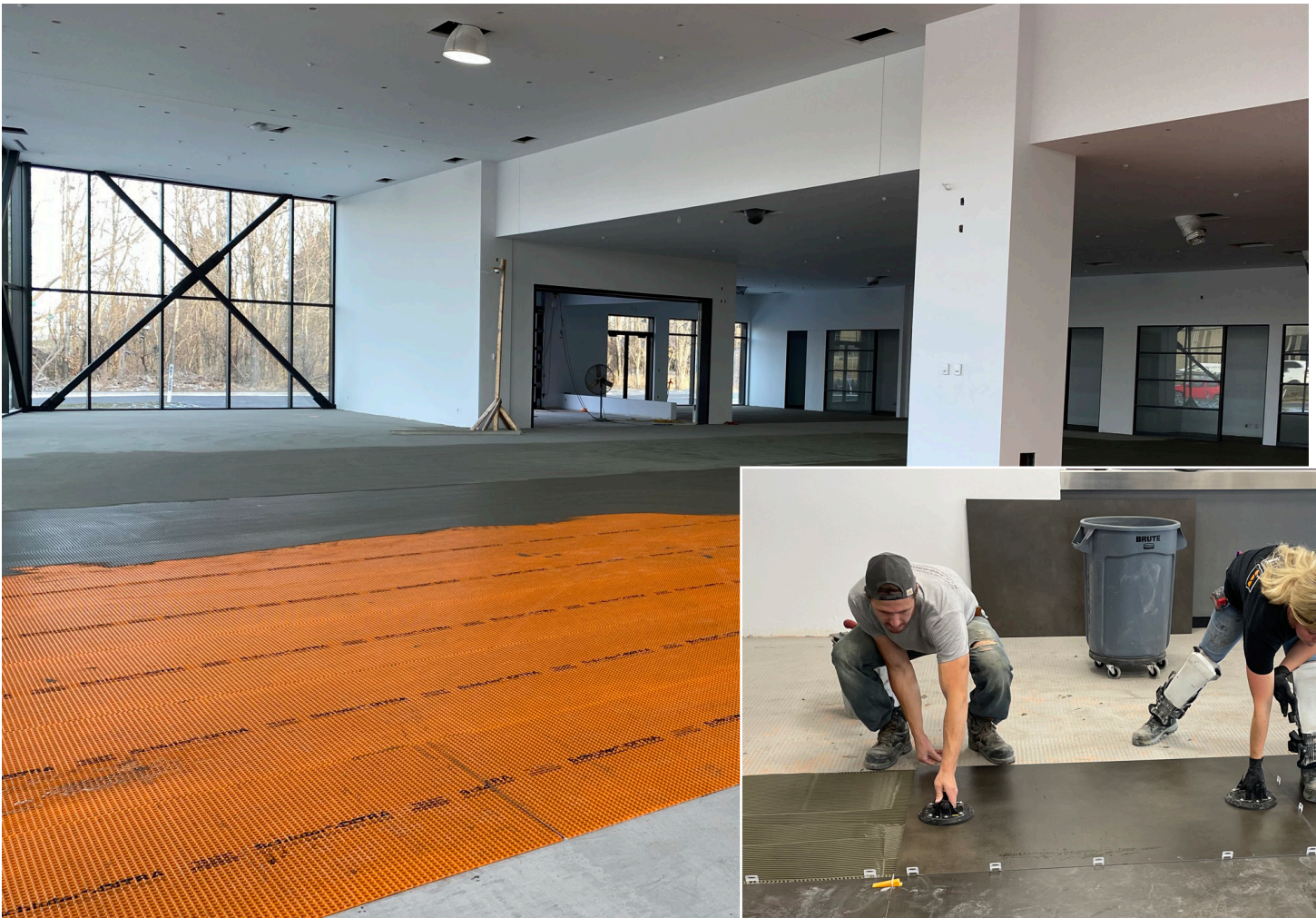
OBJECTIVE:

Their showroom holds a lot of important cargo, and the look and durability of their space is paramount. When they moved into this new location, they were taking over what was an existing dealership. The issue was the space was too small for their needs, so they needed to enlarge the footprint to accommodate their growing business.



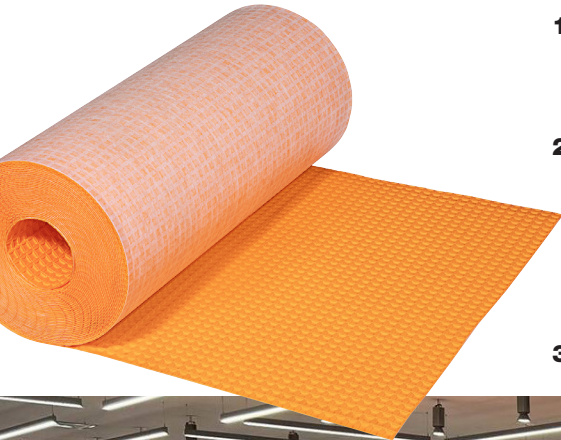
CHALLENGES:

The challenge from a construction perspective was to connect the existing slab with their new slab, while creating slopes for easy access from outside into the showroom and accommodating the transition to the service area. Problem was that all the floors were at different heights. After removing existing tile, grinding down parts of the floor, and using dry-pack and self-levelers to correct the final touches of the surface, they incorporated the Schluter®-DITRA uncoupling membrane



SOLUTION:

Schluter®-DITRA facilitated three important goals they wanted to achieve.



- 1. High-end look:** DITRA provided the foundation for large-format tiles that contributed to the high aesthetic of the space.
- 2. Durability:** they needed an uncoupling membrane that would ensure the tile floor was going to last without the risk of cracked tiles and grout, as they knew that making any future repairs with their cargo in place would be difficult and cause major disruptions to their daily business.
- 3. High Load Bearing:** DITRA provided the additional benefit of a high load bearing capacity.



The other component in this installation was movement joints, which allowed for a clean floor tile installation throughout the space. Without movement joints, tiles may have been subject to cracking at critical transition points.

RESULT:

The end goal of this project was to create a larger, high-end space with aesthetic appeal that would match the distinction of their brand. Today, the look of their showroom is simply exquisite, and with the care of the installation and quality products, is sure to last.